

# Be prepared to fall in love with Petrichor Farm

AND CREATE YOUR DREAM COUNTRY WEDDING



A romantic couple is seen from behind, walking hand-in-hand through a vast field of tall, golden-brown grass. They are positioned in the lower center of the frame, looking out over a wide, flat landscape towards a bright sunset on the horizon. The sky is filled with soft, wispy clouds, and the overall atmosphere is serene and peaceful. The text is overlaid on the upper portion of the image.

# Serene, expansive and timeless views *for lovers and dreamers*

Only 30 minutes from Canberra, you will have exclusive access to the venue making your day even more memorable



# Woohoo...Congrats on the big announcement!

How exciting - you're engaged and ready to embark on the journey of planning your best day ever! We're super excited that you are considering PETRICHOR FARM to host your wedding celebration.

Service and hospitality spark our joy, so we are a full service function space. What does this mean? No need to worry about hanging festoon lights, lugging cases of beer or folding napkins. We have your back so the event runs smoothly, all you need to do is be in the moment, enjoy the day and create memories to last a lifetime.

Happy planning lovers, let the fun continue!



# *Meet Hales and Daz*

YOUR HOSTS AT PETRICHOR FARM

Hey that's us on our big day and swinging the tools of our trade! As wedding photographers over the last two decades we have experienced a gig or two.

This time on the ground has given us a unique insight into what it takes to create a smoothly run event with a relaxed and warm vibe. We feel the secret ingredient, is care and genuine hospitality to all of our guests and your working crew.

We are with you every step of the way, from the initial contact, planning the day in detail to waving your guests goodbye on the bus!

We would love to chat and hear your wedding vision - Hales + Daz xox



# Inclusions in your venue hire fee

- Exclusive access to the 168 acre property with rolling hills and expansive views. Instagram-worthy locations from lush lawns to windswept fields, old farm equipment and shearing shed
- Fully equipped 2 x bedroom bridal cottage for bridal prep and wedding night for the bridal couple (check-in 12pm check-out 10am the next day)
- Multiple on site ceremony locations, inclusive of 40 bentwood chairs, your choice of arbour, signing table and easel
- Access to use our "Petrichor Propshop" which includes rustic vases, brass candle holders, amber glass tea light holders, and much more!
- Venue room setup including beautiful napery, linen table runners, earthy tableware, glassware and cutlery, your name cards and favours
- Cake barrel table, cake knife and stand, and wishing well table
- Bose in house speaker system for your band or DJ to wire into including iPhone connectivity/Roving microphone for speeches
- Wide array of fun Swedish lawn games (quoits, skittles, croquet, giant jenga)
- Onsite parking for 15 cars, wheelchair accessibility to venue and accessible toilet



STUNNING SPACES FOR YOUR CEREMONY— INDOORS &  
OUTDOORS, WHATEVER THE WEATHER





The *changing colours* of the shady elm tree provides a perfect canopy to say “*I do*”





Arbours to suit your vibe  
choose from luxe gold glam  
rustic boho or minimal minx







We offer our famous  
Petrichor Punch and still water  
to your guests complimentary  
on arrival before your ceremony









# The restored bridal cottage for your use

Check-in 12pm on the day of your wedding and check-out 10am the following day





# *Rustic luxe* reception room

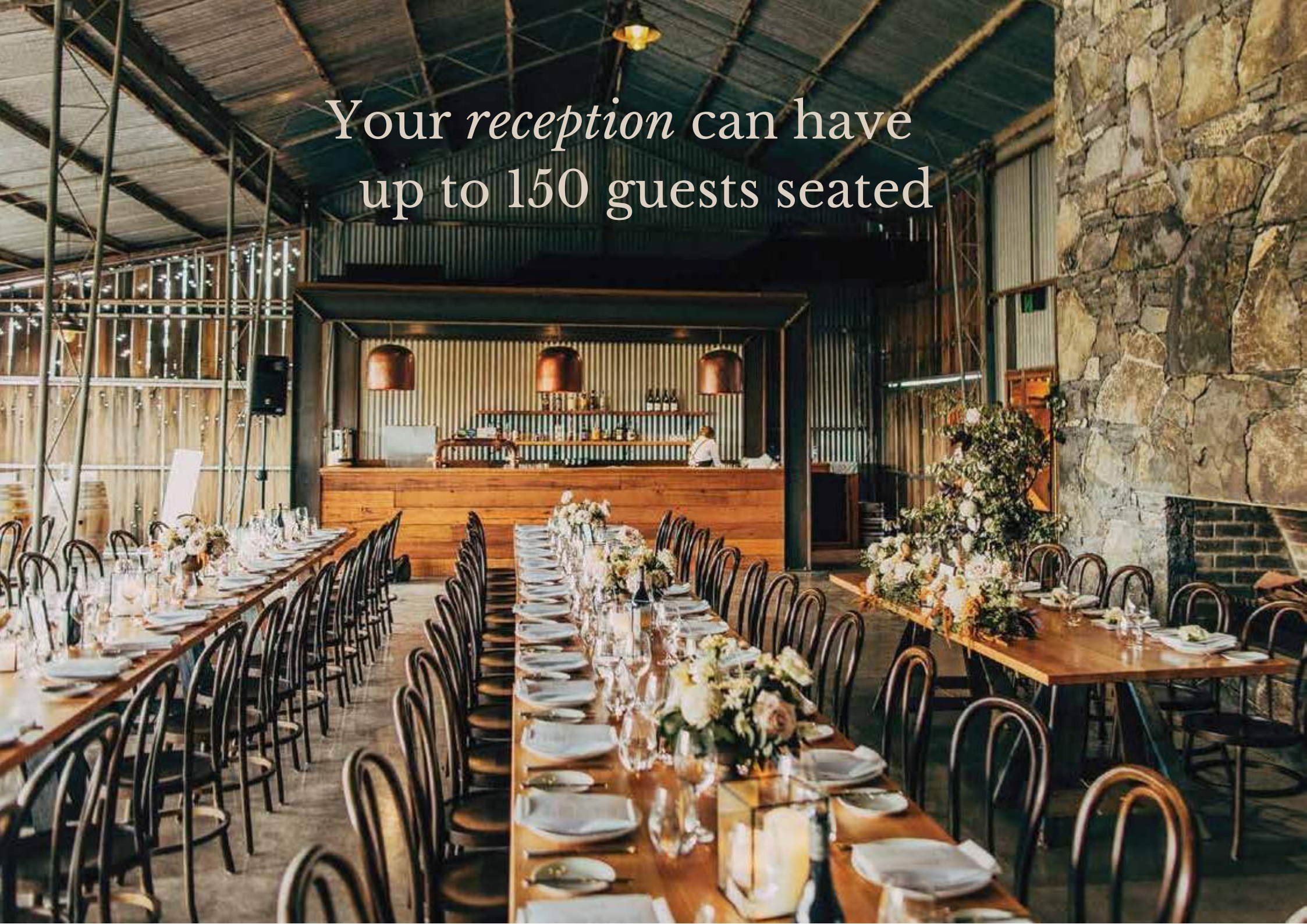
## THE WOOLSHED

Our Aussie heritage style woodshed has modern facilities, including air-conditioning for maximum comfort. It features vaulted high timber-clad ceiling, insulated corrugated walls, a handcrafted blue-rock fire place and a hip rustic bar all with a touch of copper glam





Your *reception* can have  
up to 150 guests seated





Styling to suit you  
all earthy and with a relaxed  
chic undertone





# *A sumptuous, seasonal approach that brings your people together*

Our Woolshed is designed with socialising in mind. So our style of food is based around a plentiful **SHARING APPROACH** of feasting, designed to bring your friends and family together. Long feasting tables that seat 12 are joined together and laid out to create an inclusive feeling for your guests to enjoy their food experience.





# *Feasting*

**\$158 PER PERSON**

Seat your guests together to share a meal in family-friendly style—like a big, luxury family roast, with plenty of delicious, country fresh food, whole lamb shoulders, herbed chicken, crunchy baked spuds and plentiful fresh roasted seasonal vegies, or salads.

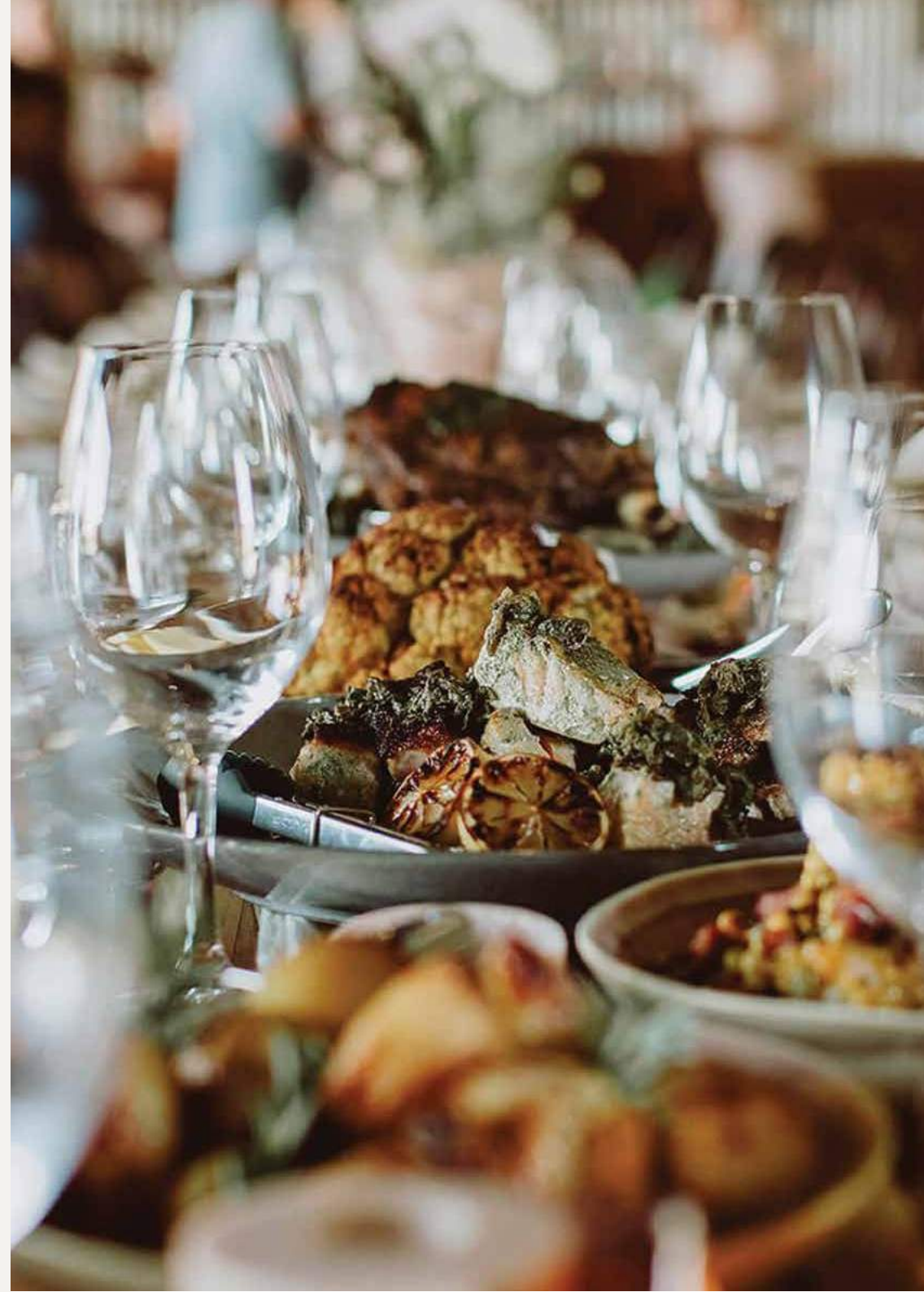
Starts with a sumptuous fully styled large grazing table with charcuterie, cheeses, dips, chargrilled vegetables, spanakopita, breads, crackers and many more delicious delights. Revealed to enjoy after your ceremony and once the drinks have kicked off

Followed with a sit down seasonal sharing style menu, choose three mains and three side dishes

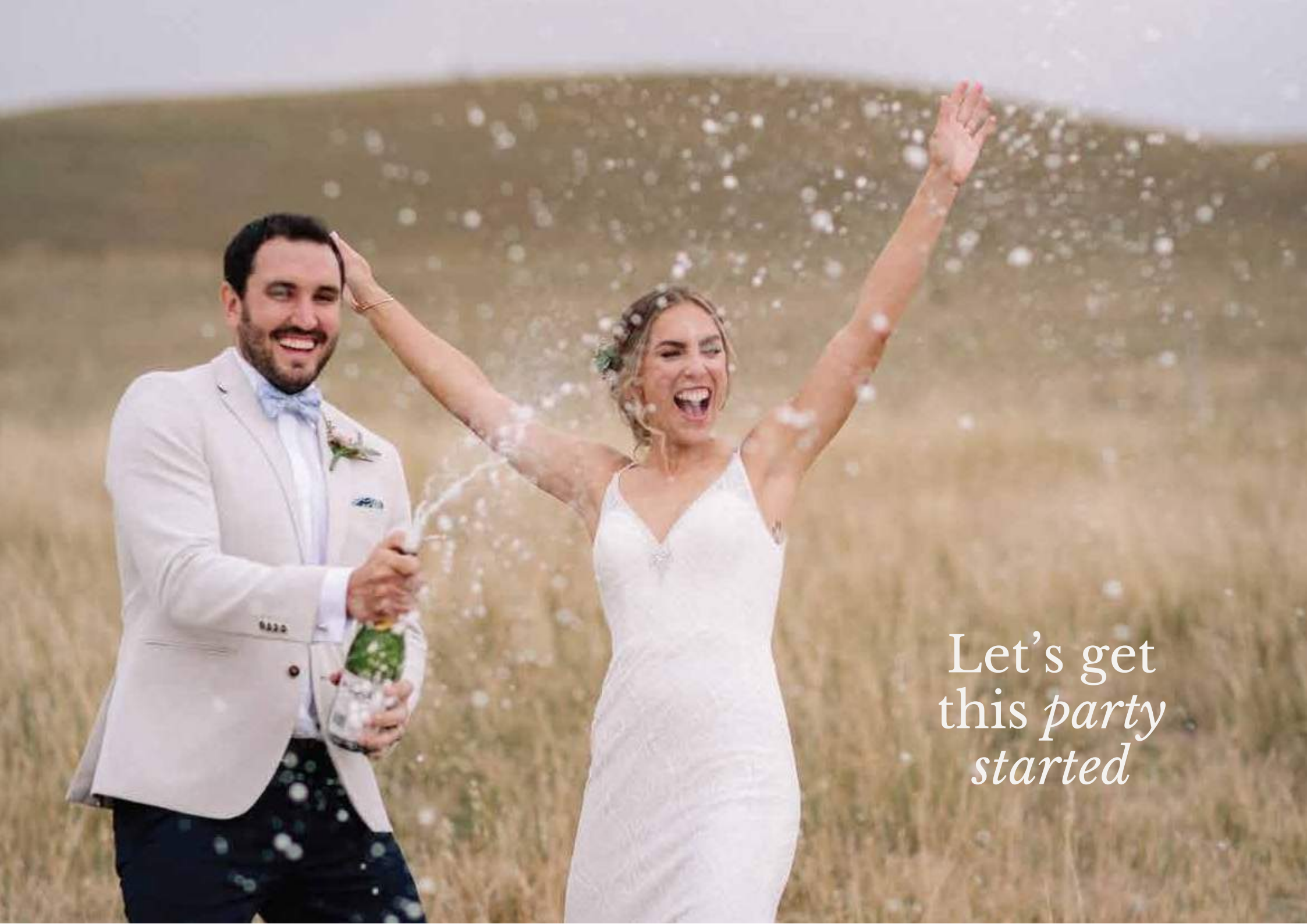
Served with warm bread rolls and churned butter

Your wedding cake cut and served on platters

Barista coffee and gourmet tea







Let's get  
this *party*  
*started*



# *Beverage Options* to suit your budget and bibulous behaviour!

Petrichor Farm works with quality Australian wineries and local breweries to pair the perfect wines and beers to our seasonal menus. Fully licensed until 11pm

**TIER 1: \$55 / PERSON**

**TIER 2: \$75 / PERSON**

**TIER 3: \$95 / PERSON**

Tiers include sparkling wine, white wine, red wine, rosé, full-strength, light and craft beer, with non-alcoholic drinks and sodas for five hours

Spirits & cocktails available / priced on consumption

Extra beverage hours can be added / additional fee applies

A close-up photograph of a person's hands pouring sparkling wine from a dark bottle into a tall, flute-shaped glass. The person is wearing a dark suit jacket. The background is a blurred outdoor setting with green grass and a white railing. A brown text box is overlaid on the right side of the image.

All beverage packages are 5 hours



# Venue Hire

JAN · JUNE · JULY · AUG	FEB · MAR · APR · MAY	SEP · OCT · NOV · DEC
\$4,400	\$5,500	\$5,500

All prices include GST and are subject to change for 2024 weddings. Minimum requirement of 70 guests for Friday, Saturday, Sunday weddings.





## Have less than 70 guests and want a smaller soiree? The Petite at Petrichor midweek wedding might be your jam



Offered on any Thursday with a venue hire fee of only \$3,500 with a minimum of 20 guests, its the perfect choice for stylish elopements, and intimate gatherings







# Extra Delights to customise your day your way

Dessert Bar  
Post Dinner cheese station  
Cocktail hour  
Gin Cart  
Champagne Tower  
Helicopter ride  
Gelato cart  
Extra beverage hour + sliders  
priced / person







Imagine your first dance  
under the starry night sky  
and fun festoon lighting











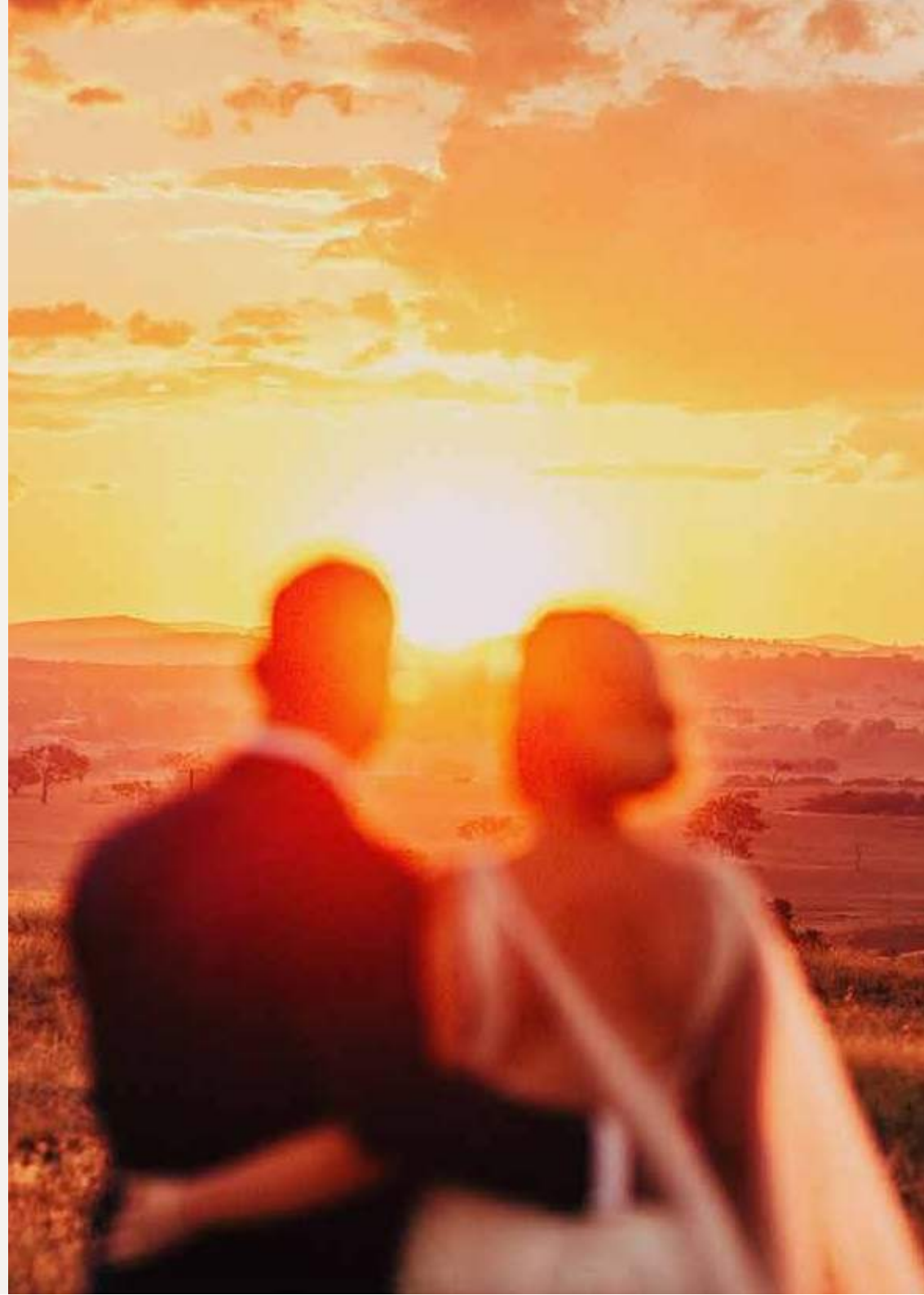
Come and see the  
*romantic scenery*  
for yourself.

**BOOK A VIEWING AND LETS CHAT!**  
Email : [events@petrichorfarm.com.au](mailto:events@petrichorfarm.com.au)

Only 30 minutes drive from Canberra on the M23



Petrichor Farm is also perfect for corporate days out, birthdays and family milestones, romantic weekend breaks.







# PETRICHOR FARM.

*Gundaroo*

0412 492 192

[events@petrichorfarm.com.au](mailto:events@petrichorfarm.com.au)

[www.petrichorfarm.com.au](http://www.petrichorfarm.com.au)

[@petrichor.farm](#)

**89 Haskinsway, Gundaroo NSW 2620**

*(By appointment only)*

The beautiful photography you see throughout this brochure is by the following wedding photographers: Lauren Campbell, The Robertsons Photography, David Campbell Imagery, Dan O'Day Photography, The Beautiful Collective, All Grown Up, Stories by Ash, Silque by Ashleigh. If you wish to find out who the photographer is behind any particular photographs featured, please reach out to us and we'll be happy to put you in touch with them.